

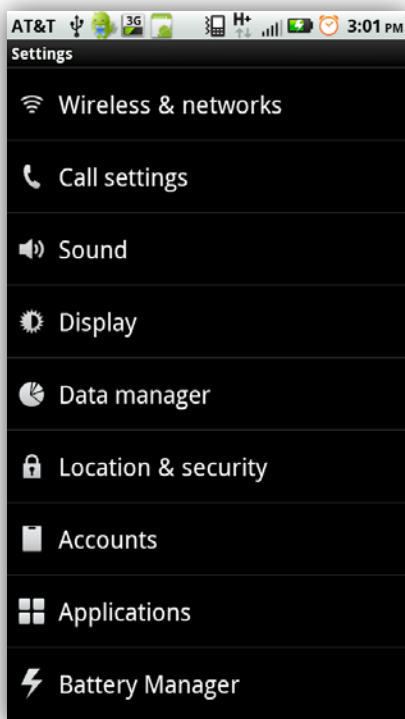
Connect Android to a WPA2 Enterprise Wireless Network

Here's how to connect your Android phone to a WPA2 Enterprise wireless network.

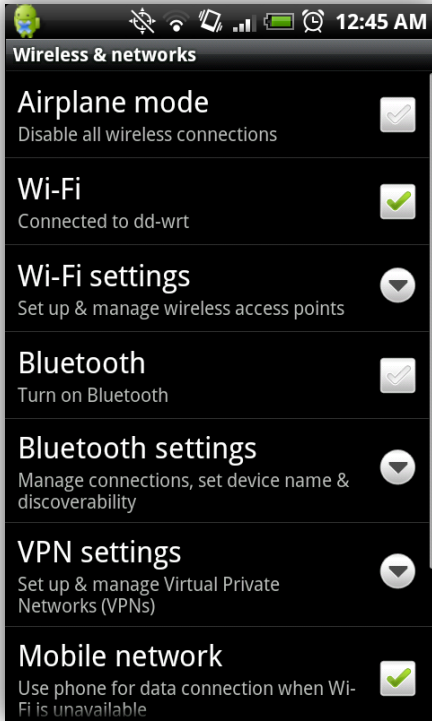
Step One: At main screen hit the menu button and select settings.



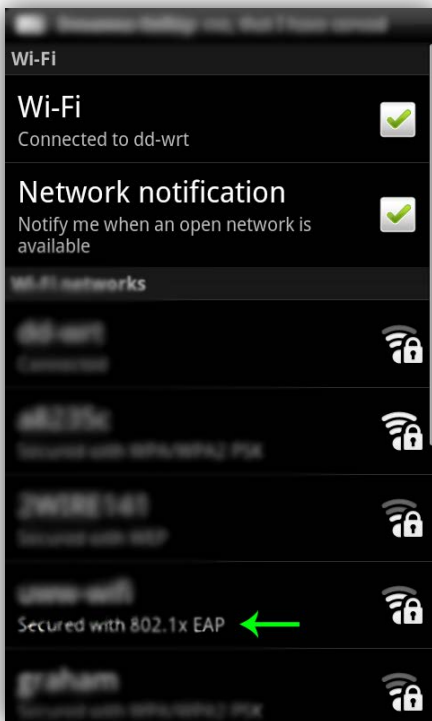
Step Two: Select "Wireless & networks"



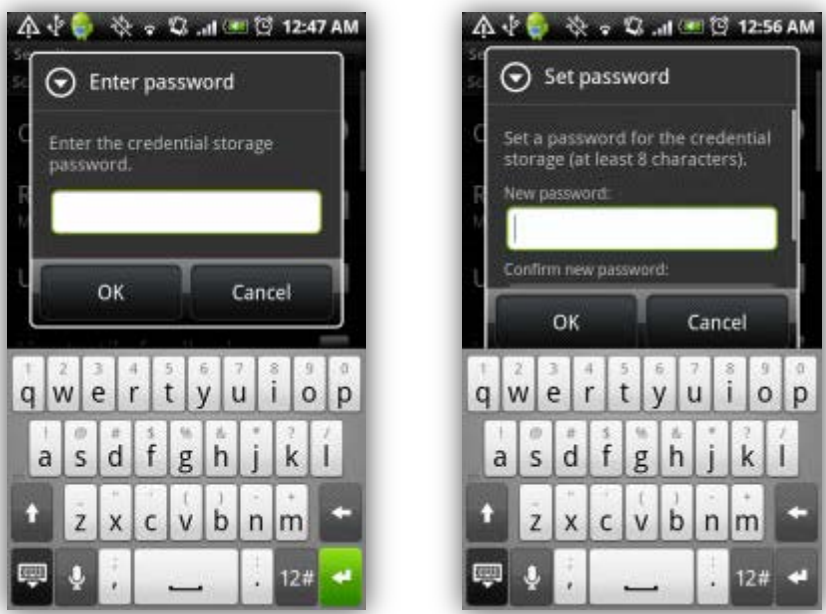
Step Three: Select “Wi-Fi settings”



Step Four: Select the “NOVAEmployeesN” network desired. Notice it doesn’t explicitly say WPA2 enterprise wireless network.



Step Five: You may or may not get a dialog box asking for credential password. If you already have a credential password enter it now. If you don't have a credential password create one. If it asks you for a WEP key don't be discouraged enter any WEP key then hit enter. You will either be prompted with the credential box or the info in step 6 screen shot.



Step Six: If it asks you for a WEP key don't be discouraged enter any WEP key then hit enter.

Change the following settings:

EAP method set to PEAP

Phase 2 authentication set to None

The identity field is same as username, but you should put your domain name first then "\" without quotes. Leave Anonymous identity blank and wireless password will be the password for your username.

